

Date 8-13-08

Installed by:
Underground Utilities

Inspected by:
Rex Moll

Res # 931

Res # 937
Woodlawn Ave

Res # 943

Res # 939

Meter Pit
Curb stop

Concrete Drive

Stone Drive

Concrete

Porch

Stone Drive

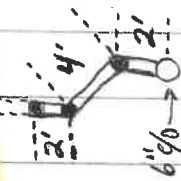
Concrete

Curb stop for future use

8" SDR 35

12" SDR 35

San. M.H.

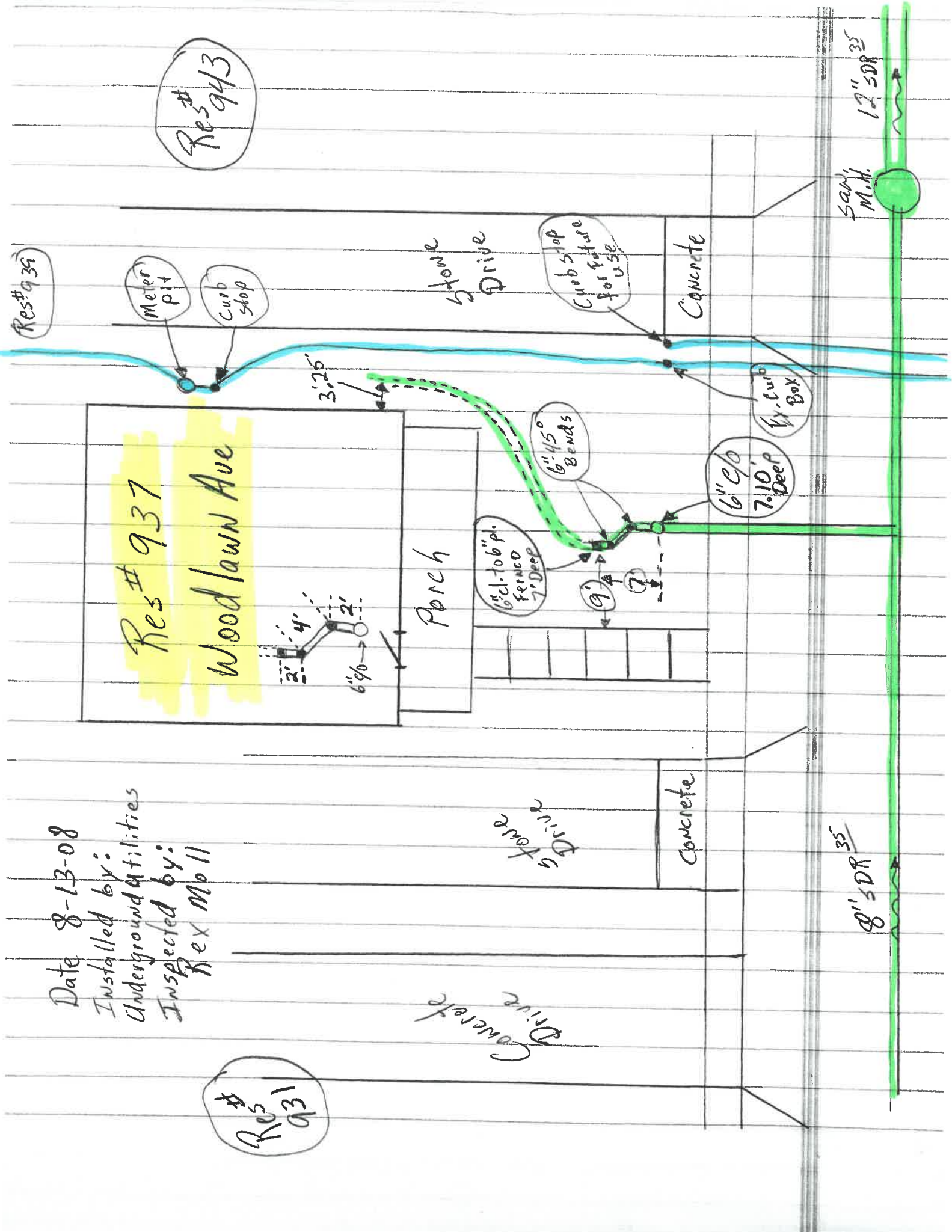


6" x 10" Fiberglass 7' Deep

6" x 45" Bends

6" x 9' 7' x 10' Deep

6" Curb Box



Date 8-13-08

Installed by:
Underground Utilities
Inspected by:
Rex Moll

Res # 931

Res # 937
Woodlawn Ave

Res # 943

Res # 939

Meter Pit
Curb Stop

Concrete Drive

Stone Drive

Concrete

8" SDR 35

Porch

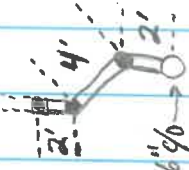
Stone Drive

Curb stop for future use

Concrete

50' M.H.

12" SDR 35



1 1/2" x 6" p. Ferro 7' Deep

6" x 15" Bends

6" x 6" 7.10' Deep

1/2" Curb Box

